

10 MHz - 6 GHz

DCB6-N1

ROHS COMPLIANT

Absolute Maximum Ratings

Storage -55 to +85 Degrees Celcius
Operating -55 to +85 Degrees Celcius
DC Input Voltage 50 Volts

Specifications

Electrical test data @ 25 Degrees Celcius

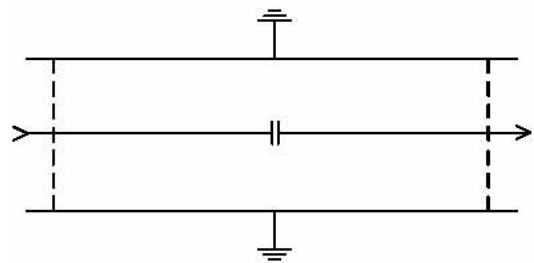
Frequency Range (MHz)	Insert Loss (dB)		Return Loss (dB)	
	Typ.	Max.	Typ.	Min.
10~1000	0.05	0.2	45	28
1000~3000	0.12	0.4	30	18
3000~4000	0.25	0.6	22	14
4000~6000	0.5	1.2	17	-



Typical Performance Data

Frequency Range (MHz)	Insertion Loss (dB)	Return Loss (dB)	
		Male	Female
10	0.01	70.05	70.42
50	0.01	53.51	53.56
100	0.02	47.91	48.73
300	0.04	41.28	41.19
500	0.05	38.24	38.85
700	0.07	37.8	38.8
900	0.07	36.66	40.09
1000	0.08	36.47	40.09
1500	0.08	36.47	40.75
2000	0.12	42.12	46.59
2500	0.14	34.69	33.85
3000	0.2	27.9	27.63

Electrical Schematic



Outline Drawing

